



INSPECTION DETAILS
(garments)
WQS Insp. # [REDACTED]-[REDACTED]-[REDACTED]

PRODUCT ITEM NUMBER: [REDACTED]

Company Name: [REDACTED]			
WQS Customer Number: [REDACTED]	Inspection Number: [REDACTED]	Inspection Date: [REDACTED]	

Special Instructions/Details:

- **components or trims:**
- **seams: insecure, puckered, grinning, roping or twisting**
- **TACKING ON SEAMS ENDS(REINFORCEMENTS STITCHES ON ALL SEAMEN ENDS)**
- **needle damage: NO LOOSE THREADS**
- **garment measurements: MUST FOLLOW OUR LAST SPEC REQUIREMENTS**
- **logo and labels: CHECK LABEL, CORRESPONDING SIZE LABEL**
- **other: SNAP MUST BE APPLIED PROPERLY**
- **other ACCESSORIES MUST CORRESPOND (STONES TO BE ON EACH COLOR AS REQUESTED AND SEWN PROPERLY**
- **OTHER: NO BUMPINESS OR STRETCHING ON NECK LINE**
- **SEE PHOTOS POCKETS AND SEAMS MUST BE STRAIGHT AND EVEN**
- **other: NO LOOSE THREADS HANGING CAN RESULT THAT GARMENT WILL RAVEL**
- TOP NEEDLE THREADS HAS TO BE TOP QUALITY 40X2 POLYESTER TIGHT STITCH
- AND LOPPER CAN BE OF SELF THREAD.

All supporting documentation such as pictures, drawings, diagrams, etc. SEE ATTACHED SPEC AND SKETCH

FAILS INSPECTION

	Cri	Maj	Min
Number of Defectives found	0	10	10
Maximum Allowed(AQL 2.5 Maj. , 4.0 Min)	0	5	
No. of Inspected samples	80PCS		

END OF REPORT

Remarks:

- 1) no approved sample was submitted to verify the style.
- 2) As the inspector arrived at factory, about 93.9% were packed into individual polybag, 6.2% were being packed, none were packed into export carton.



INSPECTION DETAILS
(garments)
WQS Insp. # ■■■-■■■-■■■

MEASUREMENT IN INCHES	XS	S	M	L	XL	XXL
CHEST CIRC.	35	36	37 1/2	39	40 1/2	41 1/2
SWEEP CIRC. STRAIGHT	36	37	38 1/2	40	41 1/2	42 1/2
WAIST CIRC.	33	34	35 1/2	37	38 1/2	39 1/2
WAIST POSITION FROM H.P.S. to center	15	15 1/4	15 1/2	16	16 1/2	17
BACK LENGTH (FR.H.P.S TO CENTER EDGE)	22	22	22 1/2	23 1/2	24	24
ARMHOLE FOR SWEATER WITH SLEEVE	18 1/2	19 1/4	19 3/4	20 1/4	20 3/4	21 1/4
SLEEVE LENGTH (FR. CENTER BACK TO EDGE)	28	29	30	31	31 3/4	32 1/2
CUFF OPENING	7 1/2	7 3/4	8	8 1/4	8 1/2	8 3/4
BACK NECK DROP	1	1	1	1	1	1
FRONT NECK DROP (HPS TO TOP OF NECK OPENING)	2	2	2 1/2	2 1/2	2 1/2	2 3/4
POCKET OPENING	4 1/4	4 1/4	4 1/2	4 1/2	4 3/4	4 3/4

MEASUREMENT IN INCHES	XS	S	M	L	XL	XXL
CHEST CIRC.	+3/4	/	+1/2	+1/2	+1/4	
SWEEP CIRC. STRAIGHT	/	-1/4	+3/8	/	/	
WAIST CIRC.	+5/8	+3/4	+3/8	+1/2	-1/4	
WAIST POSITION FROM H.P.S. to center	/	/	/	/	/	
BACK LENGTH (FR.H.P.S TO CENTER EDGE)	-1/8	-5/8	-1/2	-3/8	-1/2	
ARMHOLE FOR SWEATER WITH SLEEVE	+1/2	/	-1/4	+1/2	+3/4	
SLEEVE LENGTH (FR. CENTER BACK TO EDGE)	-3/8	-1/4	-1/2	-1/4	/	
CUFF OPENING	/	/	+1/4	/	/	
BACK NECK DROP	/	/	/	/	/	
FRONT NECK DROP (HPS TO TOP OF NECK OPENING)	/	+1/4	+1/4	+1/4	+1/4	
POCKET OPENING	-1/8	/	-1/8	/	-1/8	
Weight (lbs/piece)	0.86	0.91	0.96	1.12	1.05	



INSPECTION DETAILS
(garments)
WQS Insp. # ■■■-■■-■■■

MEASUREMENT IN INCHES	XS	S	M	L	XL	XXL
CHEST CIRC.	35	36	37 1/2	39	40 1/2	41 1/2
SWEEP CIRC. STRAIGHT	36	37	38 1/2	40	41 1/2	42 1/2
WAIST CIRC.	33	34	35 1/2	37	38 1/2	39 1/2
WAIST POSITION FROM H.P.S. to center	15	15 1/4	15 1/2	16	16 1/2	17
BACK LENGTH (FR.H.P.S TO CENTER EDGE)	22	22	22 1/2	23 1/2	24	24
ARMHOLE FOR SWEATER WITH SLEEVE	18 1/2	19 1/4	19 3/4	20 1/4	20 3/4	21 1/4
SLEEVE LENGTH (FR. CENTER BACK TO EDGE)	28	29	30	31	31 3/4	32 1/2
CUFF OPENING	7 1/2	7 3/4	8	8 1/4	8 1/2	8 3/4
BACK NECK DROP	1	1	1	1	1	1
FRONT NECK DROP (HPS TO TOP OF NECK OPENING)	2	2	2 1/2	2 1/2	2 1/2	2 3/4
POCKET OPENING	4 1/4	4 1/4	4 1/2	4 1/2	4 3/4	4 3/4

MEASUREMENT IN INCHES	XS	S	M	L	XL	XXL
CHEST CIRC.	+1/2	+1/2	/	+1/2	+1/4	
SWEEP CIRC. STRAIGHT	-1/4	-1/2	-1/2	-1/4	/	
WAIST CIRC.	+1/2	+1/2	/	+1/2	-1/2	
WAIST POSITION FROM H.P.S. to center	/	/	/	/	/	
BACK LENGTH (FR.H.P.S TO CENTER EDGE)	-5/8	-1/2	-3/4	/	/	
ARMHOLE FOR SWEATER WITH SLEEVE	+1/4	+1	/	+5/8	+1	
SLEEVE LENGTH (FR. CENTER BACK TO EDGE)	-1/2	-1/2	-1/2	-1/4	-1/2	
CUFF OPENING	/	+1/4	/	/	/	
BACK NECK DROP	/	-1/4	/	-1/4	-1/4	
FRONT NECK DROP (HPS TO TOP OF NECK OPENING)	+1/4	+1/4	/	+1/4	+1/4	
POCKET OPENING	/	+1/8	-1/8	/	-1/8	
Weight (lbs/piece)	0.84	0.89	0.94	1.15	1.07	



INSPECTION DETAILS
(garments)
WQS Insp. # ■■■-■■■-■■■

MEASUREMENT IN INCHES	XS	S	M	L	XL	XXL
CHEST CIRC.	35	36	37 1/2	39	40 1/2	41 1/2
SWEEP CIRC. STRAIGHT	36	37	38 1/2	40	41 1/2	42 1/2
WAIST CIRC.	33	34	35 1/2	37	38 1/2	39 1/2
WAIST POSITION FROM H.P.S. to center	15	15 1/4	15 1/2	16	16 1/2	17
BACK LENGTH (FR.H.P.S TO CENTER EDGE)	22	22	22 1/2	23 1/2	24	24
ARMHOLE FOR SWEATER WITH SLEEVE	18 1/2	19 1/4	19 3/4	20 1/4	20 3/4	21 1/4
SLEEVE LENGTH (FR. CENTER BACK TO EDGE)	28	29	30	31	31 3/4	32 1/2
CUFF OPENING	7 1/2	7 3/4	8	8 1/4	8 1/2	8 3/4
BACK NECK DROP	1	1	1	1	1	1
FRONT NECK DROP (HPS TO TOP OF NECK OPENING)	2	2	2 1/2	2 1/2	2 1/2	2 3/4
POCKET OPENING	4 1/4	4 1/4	4 1/2	4 1/2	4 3/4	4 3/4

MEASUREMENT IN INCHES	XS	S	M	L	XL	XXL
CHEST CIRC.	-3/4	+1/4	+3/4	+1/2	/	
SWEEP CIRC. STRAIGHT	/	+1/4	/	/	-1/2	
WAIST CIRC.	+1/4	+3/4	+3/4	+3/4	+1/4	
WAIST POSITION FROM H.P.S. to center	/	/	/	/	/	
BACK LENGTH (FR.H.P.S TO CENTER EDGE)	/	-5/8	-1/2	-3/4	-1/4	
ARMHOLE FOR SWEATER WITH SLEEVE	-1/2	/	+1/4	+3/4	+3/4	
SLEEVE LENGTH (FR. CENTER BACK TO EDGE)	-1/4	-1/4	+1/4	+3/4	/	
CUFF OPENING	/	/	/	/	/	
BACK NECK DROP	-1/4	/	-1/4	-1/4	-1/4	
FRONT NECK DROP (HPS TO TOP OF NECK OPENING)	+3/8	/	+3/8	/	+3/8	
POCKET OPENING	-1/8	+1/8	-1/8	-1/4	/	
Weight (lbs/piece)	0.86	0.90	0.96	1.03	1.08	



INSPECTION DETAILS
(garments)
WQS Insp. # ■■■-■■-■■■

MEASUREMENT IN INCHES	XS	S	M	L	XL	XXL
CHEST CIRC.	35	36	37 1/2	39	40 1/2	41 1/2
SWEEP CIRC. STRAIGHT	36	37	38 1/2	40	41 1/2	42 1/2
WAIST CIRC.	33	34	35 1/2	37	38 1/2	39 1/2
WAIST POSITION FROM H.P.S. to center	15	15 1/4	15 1/2	16	16 1/2	17
BACK LENGTH (FR.H.P.S TO CENTER EDGE)	22	22	22 1/2	23 1/2	24	24
ARMHOLE FOR SWEATER WITH SLEEVE	18 1/2	19 1/4	19 3/4	20 1/4	20 3/4	21 1/4
SLEEVE LENGTH (FR. CENTER BACK TO EDGE)	28	29	30	31	31 3/4	32 1/2
CUFF OPENING	7 1/2	7 3/4	8	8 1/4	8 1/2	8 3/4
BACK NECK DROP	1	1	1	1	1	1
FRONT NECK DROP (HPS TO TOP OF NECK OPENING)	2	2	2 1/2	2 1/2	2 1/2	2 3/4
POCKET OPENING	4 1/4	4 1/4	4 1/2	4 1/2	4 3/4	4 3/4

MEASUREMENT IN INCHES	XS	S	M	L	XL	XXL
CHEST CIRC.	+1/4	+1/4	+1/2	+1/4	+1/4	
SWEEP CIRC. STRAIGHT	/	/	/	/	-1/4	
WAIST CIRC.	+1/2	+1/4	/	/	/	
WAIST POSITION FROM H.P.S. to center	/	/	/	/	/	
BACK LENGTH (FR.H.P.S TO CENTER EDGE)	/	-1/4	-1/2	-1/2	-1/4	
ARMHOLE FOR SWEATER WITH SLEEVE	-1/4	/	+1/4	/	+1/2	
SLEEVE LENGTH (FR. CENTER BACK TO EDGE)	-1/4	-1/4	/	/	/	
CUFF OPENING	/	+1/4	/	-1/4	+1/4	
BACK NECK DROP	-1/4	-1/4	/	-1/4	-1/4	
FRONT NECK DROP (HPS TO TOP OF NECK OPENING)	+1/4	/	/	+1/4	/	
POCKET OPENING	-1/8	/	/	/	/	
Weight (lbs/piece)	0.88	0.92	0.94	1.09	1.12	



INSPECTION DETAILS
(garments)
WQS Insp. # ■■■-■■■-■■■

MEASUREMENT IN INCHES	XS	S	M	L	XL	XXL
CHEST CIRC.	35	36	37 1/2	39	40 1/2	41 1/2
SWEEP CIRC. STRAIGHT	36	37	38 1/2	40	41 1/2	42 1/2
WAIST CIRC.	33	34	35 1/2	37	38 1/2	39 1/2
WAIST POSITION FROM H.P.S. to center	15	15 1/4	15 1/2	16	16 1/2	17
BACK LENGTH (FR.H.P.S TO CENTER EDGE)	22	22	22 1/2	23 1/2	24	24
ARMHOLE FOR SWEATER WITH SLEEVE	18 1/2	19 1/4	19 3/4	20 1/4	20 3/4	21 1/4
SLEEVE LENGTH (FR. CENTER BACK TO EDGE)	28	29	30	31	31 3/4	32 1/2
CUFF OPENING	7 1/2	7 3/4	8	8 1/4	8 1/2	8 3/4
BACK NECK DROP	1	1	1	1	1	1
FRONT NECK DROP (HPS TO TOP OF NECK OPENING)	2	2	2 1/2	2 1/2	2 1/2	2 3/4
POCKET OPENING	4 1/4	4 1/4	4 1/2	4 1/2	4 3/4	4 3/4

MEASUREMENT IN INCHES	XS	S	M	L	XL	XXL
CHEST CIRC.	+1/4	/	/	/	/	
SWEEP CIRC. STRAIGHT	/	-1/4	+1/4	+1/4	-1/4	
WAIST CIRC.	+1/4	/	+1/4	+1/4	/	
WAIST POSITION FROM H.P.S. to center	/	/	/	/	/	
BACK LENGTH (FR.H.P.S TO CENTER EDGE)	-1/4	-1/2	/	-1/4	-5/8	
ARMHOLE FOR SWEATER WITH SLEEVE	+1/4	+3/4	-1/4	+1/4	+1/2	
SLEEVE LENGTH (FR. CENTER BACK TO EDGE)	/	/	/	-1/4	-1/2	
CUFF OPENING	+1/4	/	+1/4	+1/4	/	
BACK NECK DROP	/	/	-1/4	/	/	
FRONT NECK DROP (HPS TO TOP OF NECK OPENING)	/	+3/8	+1/4	+3/8	+1/4	
POCKET OPENING	/	/	/	-1/8	/	
Weight (lbs/piece)	0.86	0.92	0.95	1.05	1.08	



INSPECTION DETAILS
(garments)
WQS Insp. # ■■■-■■■-■■■

MEASUREMENT IN INCHES	XS	S	M	L	XL	XXL
CHEST CIRC.	35	36	37 1/2	39	40 1/2	41 1/2
SWEEP CIRC. STRAIGHT	36	37	38 1/2	40	41 1/2	42 1/2
WAIST CIRC.	33	34	35 1/2	37	38 1/2	39 1/2
WAIST POSITION FROM H.P.S. to center	15	15 1/4	15 1/2	16	16 1/2	17
BACK LENGTH (FR.H.P.S TO CENTER EDGE)	22	22	22 1/2	23 1/2	24	24
ARMHOLE FOR SWEATER WITH SLEEVE	18 1/2	19 1/4	19 3/4	20 1/4	20 3/4	21 1/4
SLEEVE LENGTH (FR. CENTER BACK TO EDGE)	28	29	30	31	31 3/4	32 1/2
CUFF OPENING	7 1/2	7 3/4	8	8 1/4	8 1/2	8 3/4
BACK NECK DROP	1	1	1	1	1	1
FRONT NECK DROP (HPS TO TOP OF NECK OPENING)	2	2	2 1/2	2 1/2	2 1/2	2 3/4
POCKET OPENING	4 1/4	4 1/4	4 1/2	4 1/2	4 3/4	4 3/4

MEASUREMENT IN INCHES	XS	S	M	L	XL	XXL
CHEST CIRC.	/	+1/4	+5/8	-1/4	+1/2	
SWEEP CIRC. STRAIGHT	+1/4	/	/	/	/	
WAIST CIRC.	/	+1/2	/	+3/8	+1/4	
WAIST POSITION FROM H.P.S. to center	/	/	/	/	/	
BACK LENGTH (FR.H.P.S TO CENTER EDGE)	-1/4	/	-1/4	/	-1/4	
ARMHOLE FOR SWEATER WITH SLEEVE	/	+1/4	+5/8	+3/8	+3/4	
SLEEVE LENGTH (FR. CENTER BACK TO EDGE)	-1/4	-5/8	-1/4	/	/	
CUFF OPENING	-1/4	/	-1/4	/	-1/4	
BACK NECK DROP	/	-1/4	/	-1/4	/	
FRONT NECK DROP (HPS TO TOP OF NECK OPENING)	+1/4	/	+1/4	/	/	
POCKET OPENING	/	-1/8	/	/	-1/8	
Weight (lbs/piece)	0.85	0.92	0.95	1.06	1.09	



INSPECTION DETAILS
(garments)
WQS Insp. # ■■■-■■■-■■■

MEASUREMENT IN INCHES	XS	S	M	L	XL	XXL
CHEST CIRC.	35	36	37 1/2	39	40 1/2	41 1/2
SWEEP CIRC. STRAIGHT	36	37	38 1/2	40	41 1/2	42 1/2
WAIST CIRC.	33	34	35 1/2	37	38 1/2	39 1/2
WAIST POSITION FROM H.P.S. to center	15	15 1/4	15 1/2	16	16 1/2	17
BACK LENGTH (FR.H.P.S TO CENTER EDGE)	22	22	22 1/2	23 1/2	24	24
ARMHOLE FOR SWEATER WITH SLEEVE	18 1/2	19 1/4	19 3/4	20 1/4	20 3/4	21 1/4
SLEEVE LENGTH (FR. CENTER BACK TO EDGE)	28	29	30	31	31 3/4	32 1/2
CUFF OPENING	7 1/2	7 3/4	8	8 1/4	8 1/2	8 3/4
BACK NECK DROP	1	1	1	1	1	1
FRONT NECK DROP (HPS TO TOP OF NECK OPENING)	2	2	2 1/2	2 1/2	2 1/2	2 3/4
POCKET OPENING	4 1/4	4 1/4	4 1/2	4 1/2	4 3/4	4 3/4

MEASUREMENT IN INCHES	XS	S	M	L	XL	XXL
CHEST CIRC.	-1/4	+3/4	+1/4	/	/	
SWEEP CIRC. STRAIGHT	-1/4	+1/4	+1/4	-1/4	+1/4	
WAIST CIRC.	+5/8	+1/4	+1/4	+3/4	/	
WAIST POSITION FROM H.P.S. to center	/	/	/	/	/	
BACK LENGTH (FR.H.P.S TO CENTER EDGE)	-1/2	-1/4	-1/4	-1/4	/	
ARMHOLE FOR SWEATER WITH SLEEVE	-1/4	+1/2	/	+1/2	+1/2	
SLEEVE LENGTH (FR. CENTER BACK TO EDGE)	/	-1/2	-5/8	+1/4	-1/4	
CUFF OPENING	/	-1/4	/	/	/	
BACK NECK DROP	-1/4	/	-1/4	/	-1/4	
FRONT NECK DROP (HPS TO TOP OF NECK OPENING)	/	/	/	+1/4	/	
POCKET OPENING	-1/8	-1/8	-1/8	/	-1/8	
Weight (lbs/piece)	0.83	0.92	0.97	1.02	1.07	



INSPECTION DETAILS
(garments)
WQS Insp. # ■■■-■■-■■■

MEASUREMENT IN INCHES	XS	S	M	L	XL	XXL
CHEST CIRC.	35	36	37 1/2	39	40 1/2	41 1/2
SWEEP CIRC. STRAIGHT	36	37	38 1/2	40	41 1/2	42 1/2
WAIST CIRC.	33	34	35 1/2	37	38 1/2	39 1/2
WAIST POSITION FROM H.P.S. to center	15	15 1/4	15 1/2	16	16 1/2	17
BACK LENGTH (FR.H.P.S TO CENTER EDGE)	22	22	22 1/2	23 1/2	24	24
ARMHOLE FOR SWEATER WITH SLEEVE	18 1/2	19 1/4	19 3/4	20 1/4	20 3/4	21 1/4
SLEEVE LENGTH (FR. CENTER BACK TO EDGE)	28	29	30	31	31 3/4	32 1/2
CUFF OPENING	7 1/2	7 3/4	8	8 1/4	8 1/2	8 3/4
BACK NECK DROP	1	1	1	1	1	1
FRONT NECK DROP (HPS TO TOP OF NECK OPENING)	2	2	2 1/2	2 1/2	2 1/2	2 3/4
POCKET OPENING	4 1/4	4 1/4	4 1/2	4 1/2	4 3/4	4 3/4

MEASUREMENT IN INCHES	XS	S	M	L	XL	XXL
CHEST CIRC.	+3/8	+3/8	/	+1/4	/	
SWEEP CIRC. STRAIGHT	/	-1/4	-1/4	/	/	
WAIST CIRC.	/	/	+3/8	/	+1/4	
WAIST POSITION FROM H.P.S. to center	/	/	/	/	/	
BACK LENGTH (FR.H.P.S TO CENTER EDGE)	+1/4	+1/4	+5/8	/	/	
ARMHOLE FOR SWEATER WITH SLEEVE	/	+1/2	-1/4	+1/2	+1/2	
SLEEVE LENGTH (FR. CENTER BACK TO EDGE)	-5/8	-1/4	/	/	-5/8	
CUFF OPENING	/	/	/	+1/4	/	
BACK NECK DROP	/	/	/	/	/	
FRONT NECK DROP (HPS TO TOP OF NECK OPENING)	/	+1/4	+1/4	/	+1/4	
POCKET OPENING	-1/8	/	/	/	/	
Weight (lbs/piece)	0.85	0.89	0.94	1.04	1.08	



INSPECTION DETAILS
(garments)
WQS Insp. # ■■■-■■■-■■■

(√)=ok, (X)=needs attention, (N)=not applicable, (0)=not available (requires follow up)

Sample Available?	0	Compared to Sample	0	Compared to Specs	√
Fabric Weight	X1	Embroidery	N	Care Label	√
Fabric Condition	√	Zippers	N	Fiber Content Label	√
Patterns/Prints/Colors	√	Sewing thread/Color	√	Size Label	√
Linings	N	Buttons/Snaps	√	Brand Label	√
Auxiliary (Ribbon,Patch...)	√	Belts	N	Country/Origin Label	√
				Style/Dept./I.D./R.N.	√

--

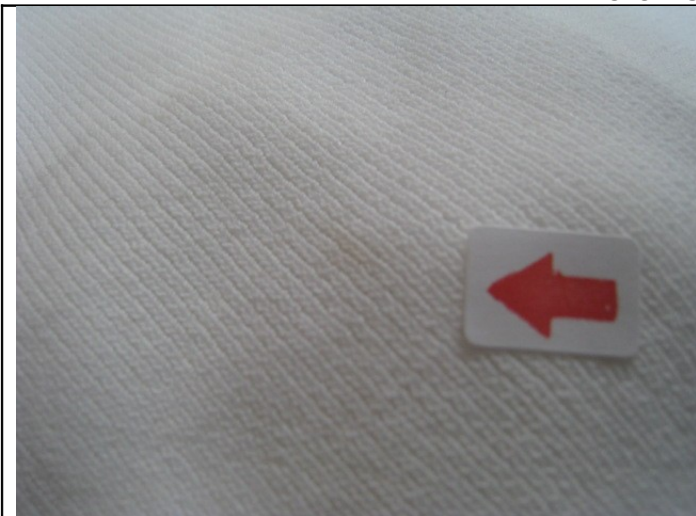
X1 – no criteria for sample weight was provided by client. Please review.



INSPECTION DETAILS
(garments)
WQS Insp. # ■■■-■■■-■■■

	MJR	MNR		MJR	MNR		MJR	MNR
FABRIC Faults/Slubs/Barre	3		BACK			BUTTONS / SNAPS		
PATTERN Size/Symmetry			POCKETS			BUTTON HOLES		
LINKING/SEAMS	7		PLACKETS			SPIRAL		
RAW SEAMS			SLEEVES			ACCESSORIES		
PUCKERING			BUTTONS / SNAPS					
COLLAR / NECK OPENING			BUTTON HOLES					
ARMHOLE			SPIRAL					
HEM / RIB			ACCESSORIES					

PICTURES



Dirty mark



Yarn ends



INSPECTION DETAILS
(garments)
WQS Insp. # [REDACTED]



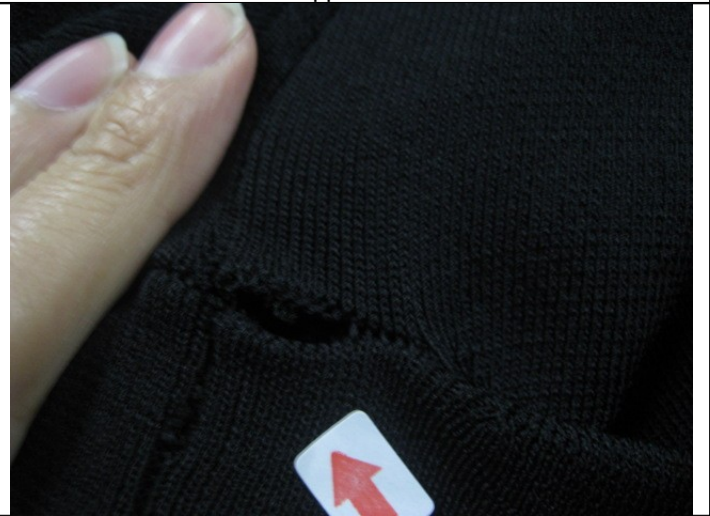
Thread ends



Dropped stitch



Insecure seam stitch



Open seam



INSPECTION DETAILS
(garments)
WQS Insp. # ■■■-■■■-■■■

	MJR	MNR		MJR	MNR		MJR	MNR
THREAD ENDS		8	SHADING			FEEL (To The Hand)		
DIRTY / OIL / STAIN		2	PRESSING			PRINTING / COLOR		
STITCHES (Balanced)			ODORS			LABELS		
STITCHES (Size)			WET / DAMPNES			PACKING		
HOLES			FOLD / PRESENTATION			LENGTH (Belts, Ribbons)		
NEEDLE DAMAGE			NECK/RIB (Recovery / Size)			MEASURMENTS / DIMENSIONS		

FAILS INSPECTION

	Cri	Maj	Min
Number of Defectives found	0	10	10
Maximum Allowed(AQL 2.5 Maj. , 4.0 Min)	0	5	7
No. of Inspected samples	80PCS		

END OF REPORT

Remarks:

- 3) no approved sample was submitted to verify the style.
- 4) As the inspector arrived at factory, about 93.9% were packed into individual polybag, 6.2% were being packed, none were packed into export carton.